



# Partnership Working - a joined up approach to active learning

*Audience: Active Partnerships / SSP's / Public Health / County Councils /  
DfE / Youth Sport Trust / AfPE*

Jon Smedley, Managing Director, Teach Active



## Creating happier, healthier and better attaining young people.

As I reflect on 2024, and look forward to 2025, one thing I am immensely proud of (and excited for moving forward) is the work which my company 'Teach Active' have done with partner organisations.

At Teach Active, we pride ourselves on being experts in the field of active learning and how active lessons can create children who are more active, who are happier, and who are achieving better.

As a school leader in an area of deprivation, with high obesity levels and poor academic achievement, I used active learning to not only improve physical and mental health, but also drive academic achievement to the top 5% of schools nationwide.

I am now fortunate enough to support schools and teachers across the UK in introducing this philosophy and pedagogy, and in doing so creating happier, healthier and better attaining young people.



**JON SMEDLEY**  
Managing Director, Teach Active



# Partnership Projects

*Working with like-minded partners is where success lies*

As an ex-school leader, I think partnership working is part of my DNA. In my role I have been fortunate enough to meet people from all over the UK who are truly inspirational and leading change – people who share my passion for making the school day more active and who firmly believe that this approach will lead to us leaving a legacy of real impactful change. Thank you to you all!

## Working with Active Partnerships

The network of Active Partnerships is full of changemakers, and we have delivered projects with 13 of them across the UK, supporting work around the ‘Creating Active Schools’ and other similar frameworks.



*Active Learning is proven to raise activity levels, academic achievement and well-being. Loughborough University are proud to work, and partner with, Teach Active.*



**PROFESSOR LAUREN SHERAR**  
Loughborough University

Loughborough University research shows...



Lessons are 33% more active



Children are ‘significantly happier’



Children are attaining better

*Through Active Partnerships we have...*



Worked with 300+ schools



Upskilled 3,000+ teachers



Impacted 60,000+ young people



## Working with Public Health

Public Health England partnerships also continued in 2024. Working with 3 Public Health teams, targeting inactivity and supporting schools and individuals to become healthier. South Tyneside Public Health is led by Ellie Forrester and Karen Armstrong. Through their pilot phase we were able to show the impact of Teach Active – which has now led to the programme being rolled out to a further group of schools.

Latest report with Public Health shows:

- 100% of teachers said children were more active
- 100% teachers reported a positive effect on children’s engagement with tasks
- 100% teachers reported children met learning objectives



*Teach Active is the perfect whole school programme to help keep all children active throughout the school day. As a Public Health professional, I see the positive impacts physical activity can have on our health and Teach Active provides fantastic opportunities to encourage activity from an early age. We’d recommend other areas taking up this excellent programme!*

**Ellie Forrester**

Senior Public Health Advanced Practitioner



South Tyneside Council



## Working with County Councils

Working with County Councils and key stakeholders to show how active learning is not just good for physical activity, but can also support young people in learning and retaining key skills in the Numeracy and Literacy, is always exciting.

Last year led us to being involved in one of our biggest projects to date – working with Essex County Council as they launched their innovative programme ‘The Year of Numbers’ – a huge project designed to drive up standards in Maths across the county.

Having the foresight to look ‘outside of the box’, Essex County Council worked with Active Essex and Teach Active to achieve this through active maths lessons!



*Essex County Council and Active Essex have been delighted to work in partnership with Teach Active – using and evidencing the impact physical activity can have on student’s engagement, attainment and confidence in developing vital numeracy skills. Through this approach we have put Teach Active Maths resources and CPD into 100 schools across the County.*

**Steve Bish**  
Education Practitioner



## Working with School Sport Partnerships and School Games Organisers

Across the UK there are over 400 SSP's/SGO's who are having a huge impact on the lives of young people. I have personally been lucky enough to work with many of them over the past 8 years and in this time met some truly incredible people (too many to mention!)

2024 saw us delivering over 100 workshops via this network and in doing so working with over 2000 teachers.

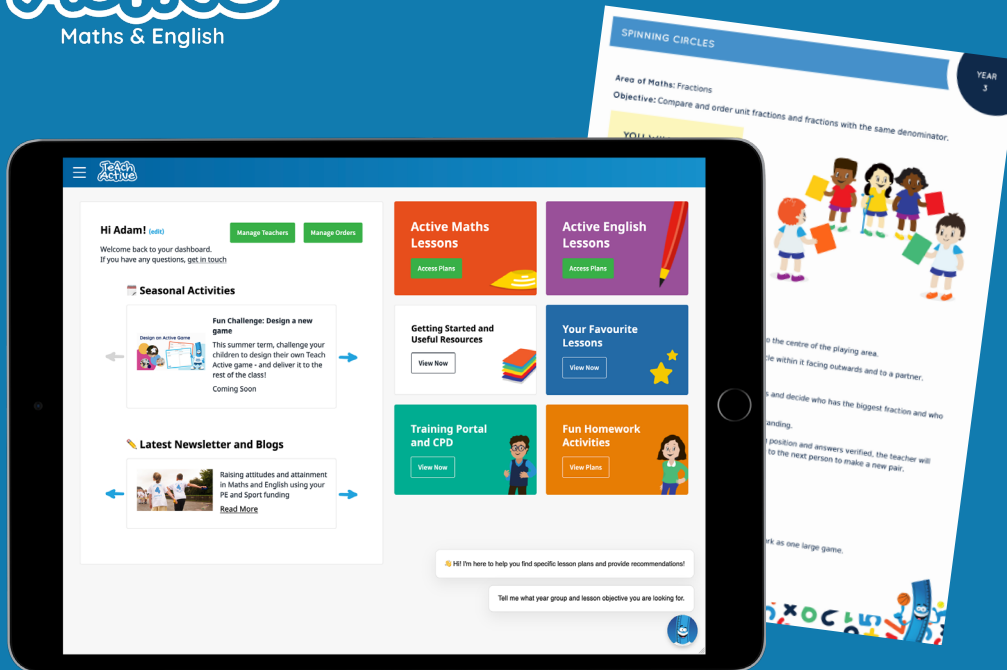
In addition to this CPD, and again thanks to some brilliant people, we were able to secure Teach Active into many schools via existing memberships or standalone projects.

One example is in Enfield, where Paula Felgate and Fiona Hathaway, made Teach Active part of their partnership 'buy-in' – introducing Teach Active to 80 Primary Schools. A similar model was adopted in Bexley, whereas smaller projects targeting specific schools were introduced with many other SSP's/SGO's across the country.



*Teach Active is a highly effective way to deliver some of the physical activity aspects of our LA buyback. There is high impact across all schools involved. Teachers value the support in making lessons more engaging through practical activities*

**Paula Felgate**  
Enfield PE Team Manager



## A reflection and where next?

2024 was a year for partnerships. In a nation where so much good work is going on, and so many of us have the same objectives, it makes sense to pool together, work with good people and make real change.

My hope for 2025 is that we strengthen existing partnerships and of course have the opportunity to work with more.

## Want to find out more?

If you would like to discuss any aspect of active learning / Teach Active, or explore partnership opportunities, then please access my diary below and schedule a meeting at a time to suit you...

[Click here to book a call](#)



**Jon Smedley**, Teach Active Founder

Email: [jon@teachactive.org](mailto:jon@teachactive.org) | Phone: 01244 735 110